



Ash Lea Drive, Donnington, Telford
Offers in the region of £184,950



Peter Richardson Estates

Offers in the region of £184,950

Spacious three bedroom newly built house, available in the popular area of Donnington, Telford. Close to local bus links and amenities including a two minute walk from Asda super store.

The property benefits from three double bedrooms, one main bathroom and a second en-suite bathroom both with bath and shower facilities.

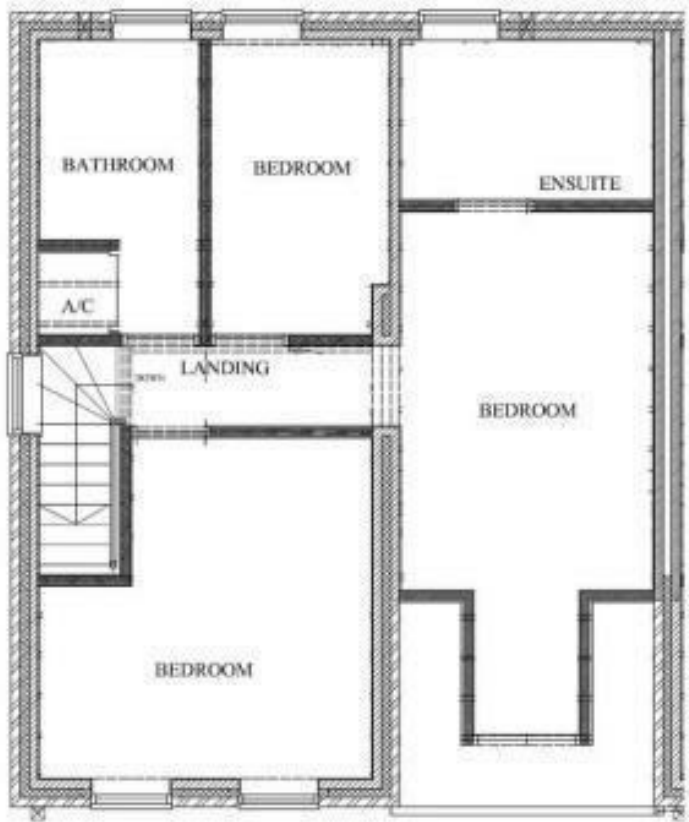
The ground floor comprises a large hallway, kitchen, downstairs w/c and large living room with direct access into the rear garden. There is off road parking available under the carport and one additional space for a car in the garage.

Please call or email for any further information or to arrange a viewing





Ground Floor



First Floor



Peter Richardson Estates Limited

10-12 Hills Lane Drive
Madeley, Telford
TF7 4BP

01952 588807
telford@peterrichardsons.co.uk

Energy Efficiency Rating		Environmental Impact (CO ₂) Rating	
	Current	Potential	
Very energy efficient - lower running costs			
(92 plus) A		88	(92 plus) A
(81-91) B			(81-91) B
(69-80) C	75		(69-80) C
(55-68) D			(55-68) D
(39-54) E			(39-54) E
(21-38) F			(21-38) F
(1-20) G			(1-20) G
Not energy efficient - higher running costs			
EU Directive 2002/91/EC		EU Directive 2002/91/EC	
England & Wales		England & Wales	